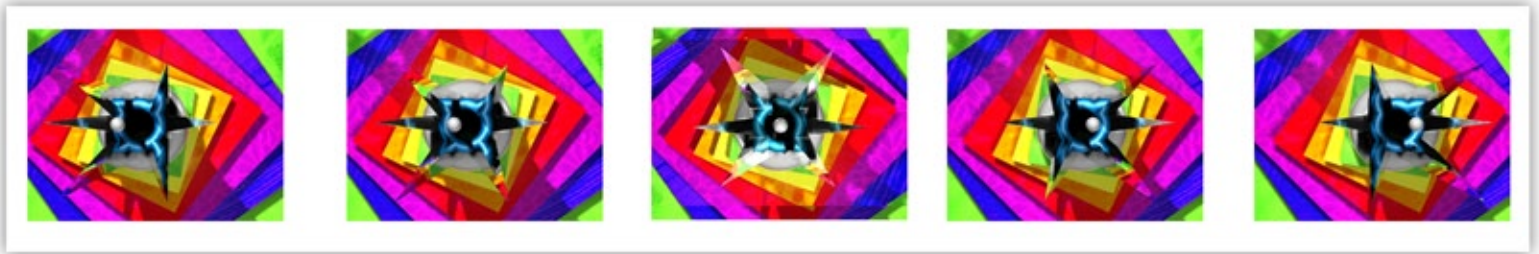
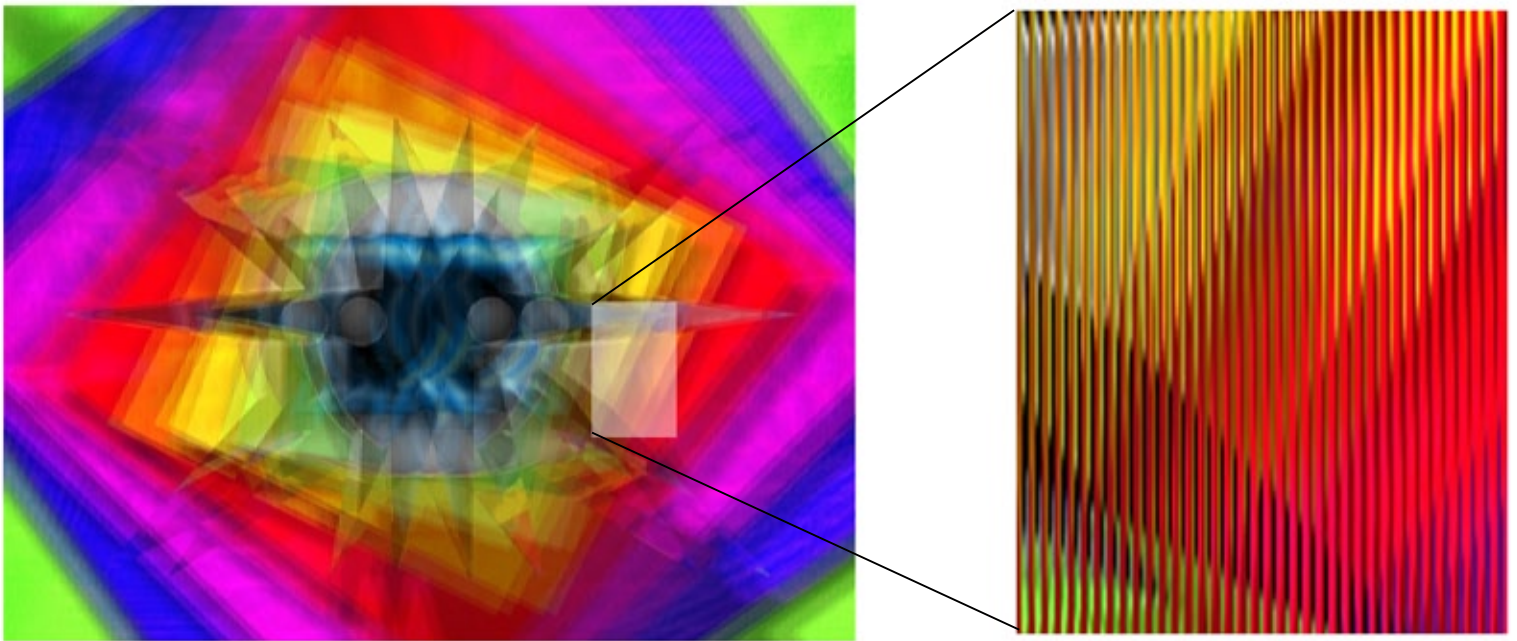


Lenticular Imagery - How does it work?

1. Multiple images of the same object at slightly different angles are produced:



2. These images are then combined into a single composite image. The composite image is composed of tiny vertical sections, each containing a piece of the images from above.



3. When the lens is placed over the compiled image, each vertical section becomes magnified. This magnification allows only one angle to be visible to the eye. Since our eyes are horizontally separated, each eye sees a slightly different image thus creating the illusion of depth! As you move across the piece you can see the image move as your eyes reveal each angle. Turn your head sideways and see what happens...

See more lenticular work by Nikolas Kazoura
at nkazoura.com

